

CAPACITY PLAN

M. V. STORNES

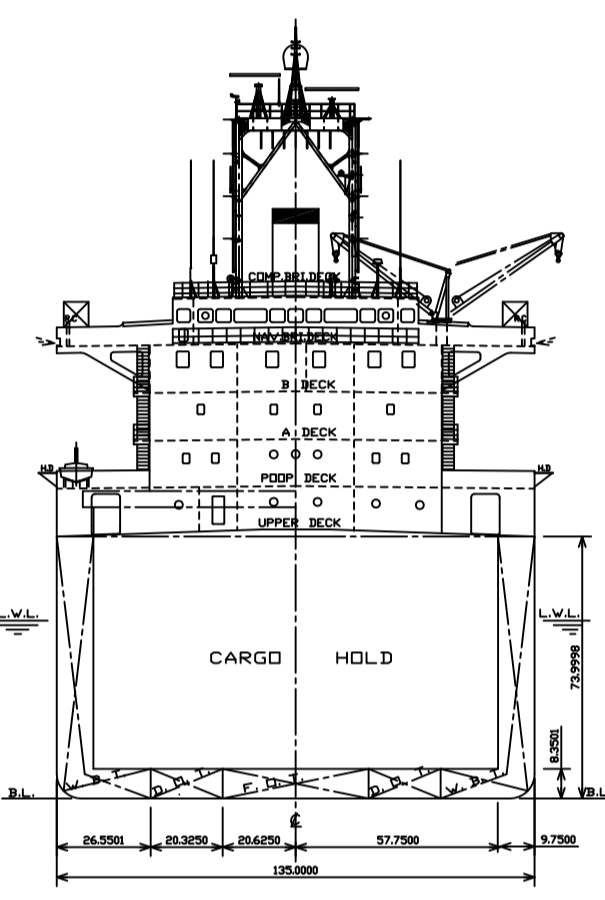
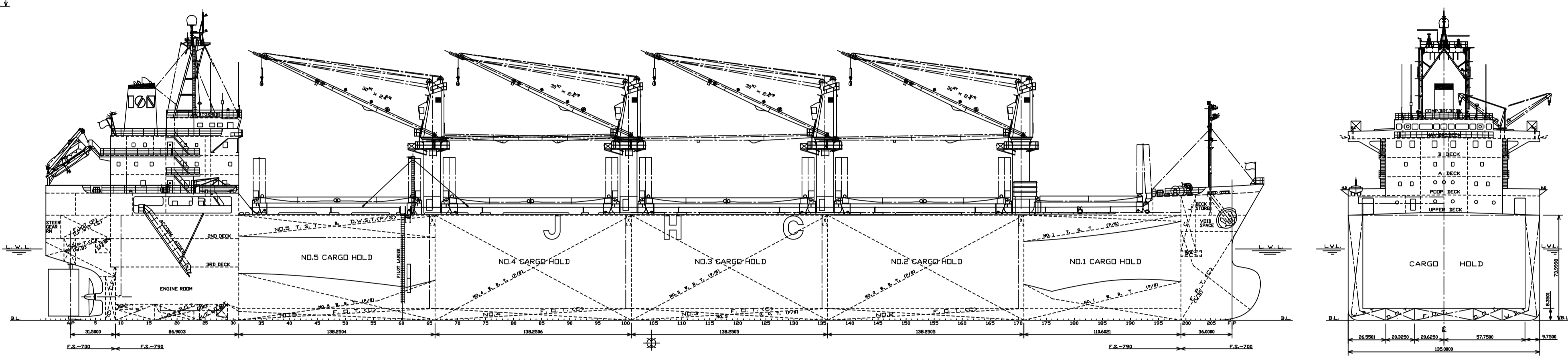
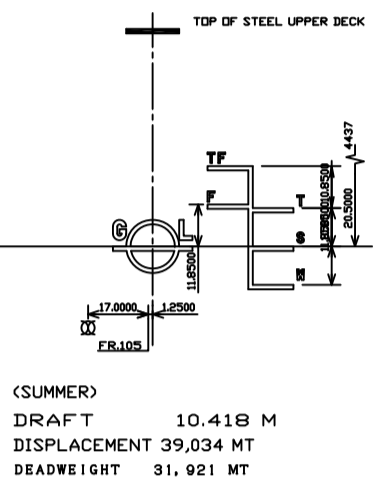
SCALE = 1:200

PRINCIPAL DIMENSIONS

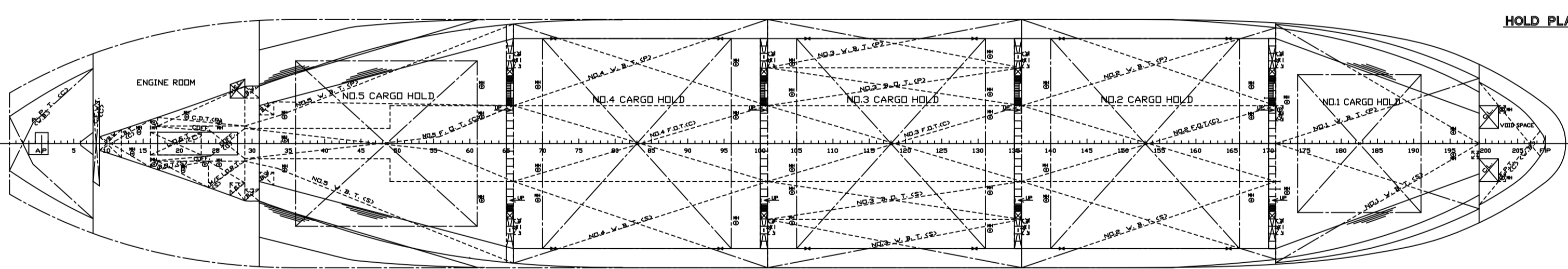
LENGTH (O.A.)	171.59 M
LENGTH (P.P.)	169.60 M
BREADTH (M.L.D.)	27.00 M
DEPTH (M.L.D.)	14.80 M
DESIGNED DRAFT (M.L.D.)	9.55 M
SCANTLING DRAFT (M.L.D.)	10.40 M
GROSS TONNAGE	16,743
NET TONNAGE	10,718
DEADWEIGHT (S=10.4)	31,921 MT
MAIN ENGINE	MITSUBISHI 6UECS2LA
M.C.G.	6.640PF x 1337mm
C.G.C.	6.640PF x 1287mm
SERVICE SPEED (C80, 15NM, 4s=10.4F)	abt. 14.5KT
COMPLEMENT	28 P
CLASS	GL

DEADWEIGHT SCALE

M.T.C. DISP'T		DRAFT		DEAD WEIGHT		T.P.C.	
T-M	MT	M	MT	MT	MT	MT	MT
490	40,000	11		35,000		41	
480		10		30,000		40	
470		9		25,000		39	
460		8		20,000		38	
450		7		15,000		37	
440		6		10,000		36	
430		5		5,000		35	
420		4					
410		3					
400		2					
390		1					
380		0					
370							
360							
350							
340							
330							
320							
310							
300							
290							
280							
270							
260							
250							
240							
230							
220							
210							
200							
190							
180							
170							
160							
150							
140							
130							
120							
110							
100							
90							
80							
70							
60							
50							
40							
30							
20							
10							
0							



HOLD PLAN



GENERAL CARGO

ITEMS	NO.	BOARD	DRAFT	DISPLACEMENT	DEADWEIGHT
LOAD LINE	NO.	NO.	NO.	NO.	NO.
SUNDRY	4,437	10,418	39,034	31,921	31,921
GRAIN	4,554	10,501	38,143	31,036	31,036
TROPICAL	4,200	10,454	39,036	31,921	31,921
FRESH WATER	4,200	10,454	39,036	31,921	31,921
TROPICAL FRESH WATER	2,982	10,472	39,050	31,935	31,935

UNITS

1 M.T. = 0.98421 L.T.
1 L.T. = 1.0160 M.T.
1 CUB.M. = 35.3147 CUB.FT.
1 CUB.FT. = 0.028317 CUB.M.
1 CUB.M. = 6.28981 U.S.BBL.S.

FRESH WATER TANK

TANK NAME	POSITION (FR. NO.)	VOLUME (M3)	WEIGHT (MT)	MIDG (M)	KG (KG)	TOG (M)	I MAX (M)
F.W.T. (C3) - 2 - B	096.95	106.95	79.84	13.38	5.58	83	
D.F.W.T. (C3) - 2 - B	106.95	106.95	79.84	13.38	5.58	83	
TOTAL		213.90					

WATER BALLAST TANK

TANK NAME	POSITION (FR. NO.)	VOLUME (M3)	WEIGHT (MT)	MIDG (M)	KG (KG)	TOG (M)	I MAX (M)
F.P.T.W.B. (C) 199 - FE	658.31	888.60	781.7	6.97	0.00	793	
NO.1 W.B.T. (C) 199 - FE	425.28	444.4	425.28	1.49	-3.92	2,148	
NO.2 W.B.T. (C) 199 - FE	444.4	444.4	444.4	1.49	-3.92	2,148	
NO.3 W.B.T. (C) 199 - FE	1,108.55	1,136.25	381.9	5.63	-11.04	1,793	
NO.4 W.B.T. (C) 199 - FE	1,108.55	1,136.25	381.9	5.63	-11.04	1,793	
NO.5 W.B.T. (C) 199 - FE	991.94	996.24	10.96	6.53	-10.27	335	
NO.6 W.B.T. (C) 199 - FE	991.94	996.24	10.96	6.53	-10.27	335	
NO.7 W.B.T. (C) 199 - FE	1,145.89	1,174.45	16.62	5.97	-11.11	1,839	
NO.8 W.B.T. (C) 199 - FE	1,145.89	1,174.45	16.62	5.97	-11.11	1,839	
NO.9 W.B.T. (C) 199 - FE	490.67	449.4	1.88	-7.71	1,514		
NO.10 W.B.T. (C) 199 - FE	490.67	449.4	1.88	-7.71	1,514		
NO.11 W.B.T. (C) 199 - FE	161.64	165.68	60.14	13.87	-10.14	187	
NO.12 W.B.T. (C) 199 - FE	161.64	165.68	60.14	13.87	-10.14	187	
NO.13 W.B.T. (C) 199 - FE	284.78	240.57	44.80	13.78	-11.71	209	
NO.14 W.B.T. (C) 199 - FE	284.78	240.57	44.80	13.78	-11.71	209	
A.P.T.W.B. (C) AE - 9	294.43	301.79	79.49	9.75	0.00	1,688	
TOTAL		10,175.920	4,550.5				

FUEL OIL TANK

TANK NAME	POSITION (FR. NO.)	VOLUME (M3)	WEIGHT (MT)	MIDG (M)	KG (KG)	TOG (M)	I MAX (M)
NO.3 F.O.T. (C) 136 - 171	375.83	356.68	386.61	0.84	0.00	1,294	
NO.3 F.O.T. (C) 101 - 136	375.83	356.68	386.61	0.84	0.00	1,294	
NO.4 F.O.T. (C) 66 - 101	375.83	356.68	165.50	0.84	0.00	1,294	
NO.5 F.O.T. (C) 89 - 64	270.95	227.13	42.82	0.84	0.00	677	
TOTAL		1,398.49	1,366.99				

DIESEL OIL TANK

TANK NAME	POSITION (FR. NO.)	VOLUME (M3)	WEIGHT (MT)	MIDG (M)	KG (KG)	TOG (M)	I MAX (M)
NO.3 D.O.T. (C) 101 - 136	184.89	159.74	11.01	0.84	-6.18	105	
NO.3 D.O.T. (C) 101 - 136	184.89	159.74	11.01	0.84	-6.18	105	
TOTAL		369.78	319.48				

OTHER TANKS

TANK NAME	POSITION (FR. NO.)	VOLUME (M3)	WEIGHT (MT)	MIDG (M)	KG (KG)	TOG (M)	I MAX (M)
C.D.T. (C) 19 - 89	37.74	37.74	62.26	1.36	-3.07	86	
B.T. (C) 19 - 89	37.74	37.74	71.90	1.17	0.00	19	
C.F.W.T. (C) 7 - 8	8.85	8.85	76.11	3.41	0.00	2	
B.D.V. (C) 17 - 84	15.11	15.11	65.86	1.48	0.70	5	

CARGO HOLD

ITEM	POSITION (FR. NO.)	GRAIN CAPACITY (CUBIC M)	BALE CAPACITY (CUBIC FT)	MIDG (M)	KG (KG)	TOG (M)	I MAX (M)
NO.1 CARGO HOLD	171 - 199	5,762.83	605,419	5,625.57	198,628	-62.48	8,391
NO.1 CARGO HATCH	174 - 191	303.13	10,725	303.13	10,725	-61.57	15,881
TOTAL		6,065.96	616,144	5,928.70	209,353	-62.05	8,772
NO.2 CARGO HOLD	136 - 171	8,241.89	894,491	8,278.78	292,297	-38.36	8,261
NO.2 CARGO HATCH	140 - 166	624.81	22,065	624.81	22,065	-38.26	15,731
TOTAL		8,866.70	916,556	8,903.59	314,362	-38.39	8,897
NO.3 CARGO HOLD	101 - 136	8,240.38	894,338	8,240.38	292,297	-38.36	8,261
NO.3 CARGO HATCH	105 - 131	624.81	22,065	624.81	22,065	-38.26	15,731
TOTAL		8,865.19	916,403	8,865.19	314,362	-38.39	8,897
NO.4 CARGO HOLD	66 - 101	8,240.38	894,338	8,278.70	292,297	-38.36	8,261
NO.4 CARGO HATCH	70 - 96	624.81	22,065	624.81	22,065	-38.26	15,731
TOTAL		8,865.19	916,403	8,903.51	314,362	-38.39	8,897
NO.5 CARGO HOLD	31 - 66	8,297.75	895,033	8,314.51	293,030	-43.97	8,541
NO.5 CARGO HATCH	36 - 61	497.62	17,274	497.62	17,274	-44.26	15,811
TOTAL		8,795.38	912,307	8,812.13	310,304	-43.99	8,956
GRAND TOTAL		41,755.771	4,474,593	41,137.871	1,452,772	-46.61	8,897

Abbreviation in this table:
 MIDG - Distance from midship to center of gravity
 KG - Transverse distance from keel to center of gravity
 TOG - Transverse distance from center line to center of gravity
 I MAX - Distance from midship to maximum I MAX

CAPACITY PLAN

SHIP NAME M/V STORNES
 SHIP NO SH-110B
 SCALE 1/200
 DESIGNED BY SAIK
 HEAVY INDUSTRIES CO., LTD.
 DESIGNING DEPT. BASIC SEC
 DRAWN BY
 CHECKED BY
 SEC. CHIEF
 DEPT. CHIEF
 DATE DWG. 11" 800' 2000
 DWG. NO. C 3 - 0 1